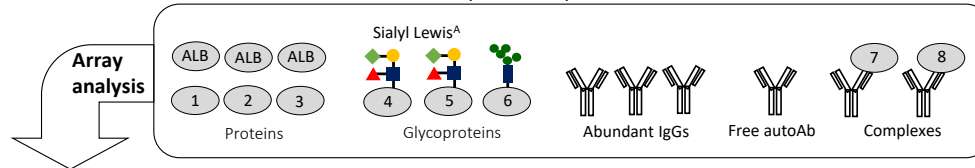


Multi-dimensional Analysis of Plasma Samples by High-density Antibody Array

Components in plasma or serum



Sample preparation

Detection after incubation and washing

Multiplex assay

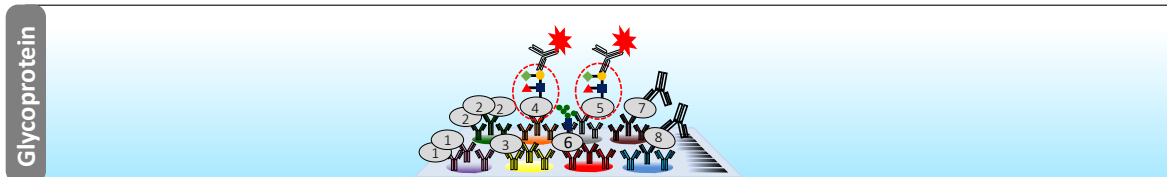
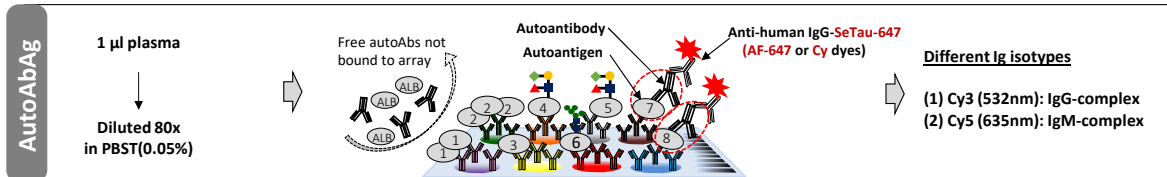
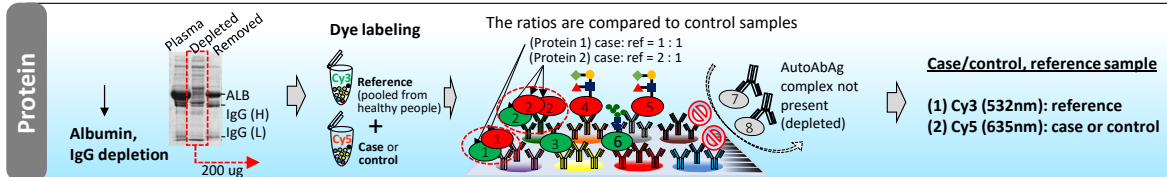
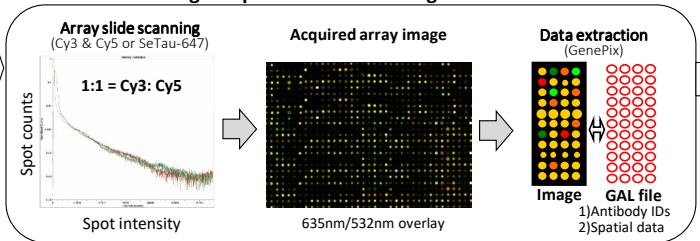


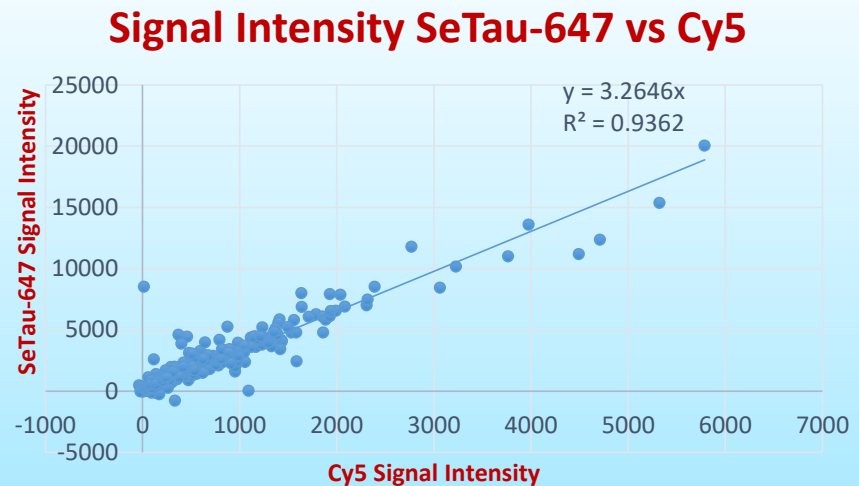
Image acquisition & raw data generation



Statistical Analysis

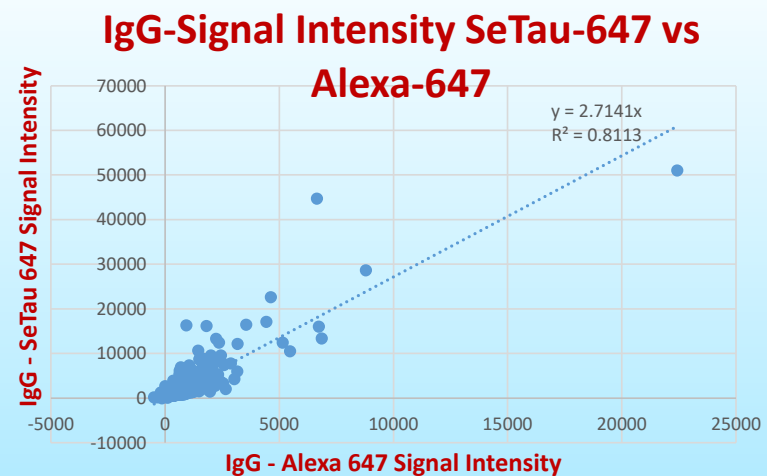
SeTau-647-labeled protein has brighter signal than Cy5-labeled protein

- 150 μg of depleted plasma protein
- Same concentrations of SeTau-647 or Cy5
- Same scan settings



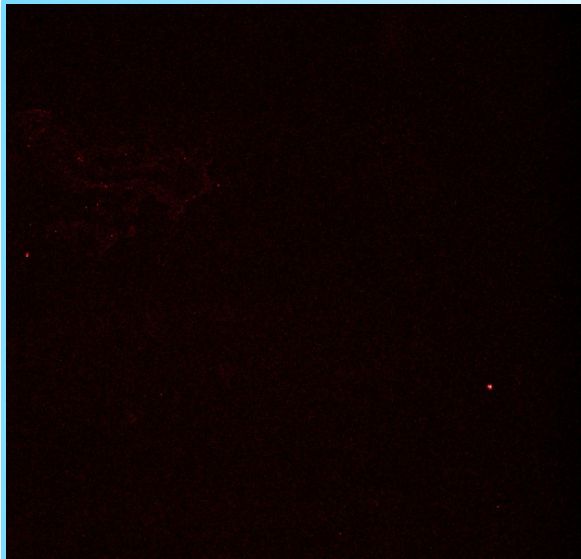
SeTau647-IgG antibody has brighter signal than Alexa647-IgG antibody

- Alexa 647-IgG was commercially labeled by Jackson
- SeTau-647-IgG was labeled in house
- Same antibody concentration
- Same PMT settings
- Same plasma sample

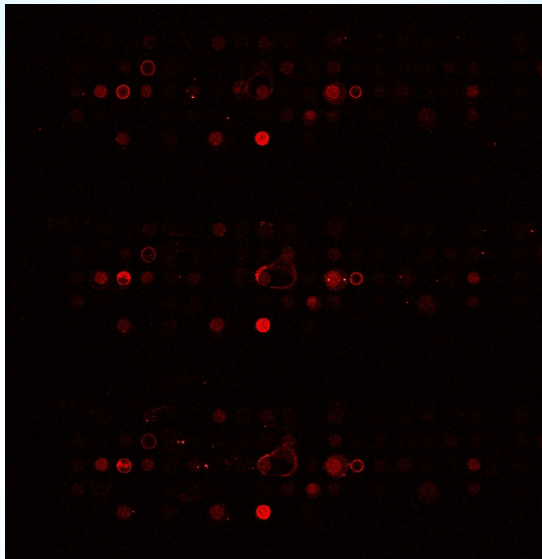


SeTau-647-SleX antibody has brighter signal than Atto647-SleX and Cy5-SleX antibody

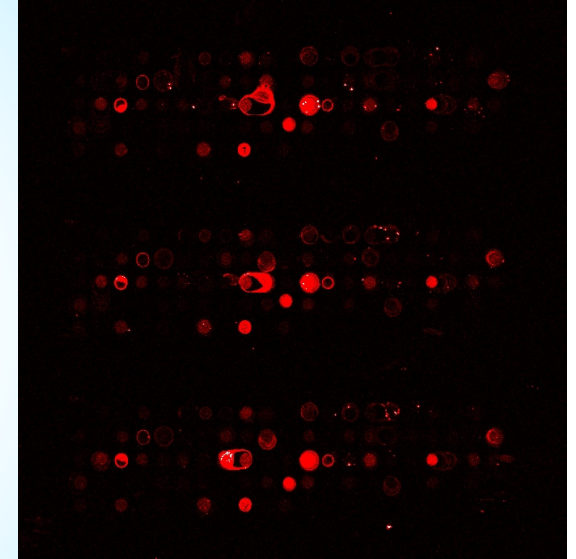
Atto647-SleX



Cy5-SleX



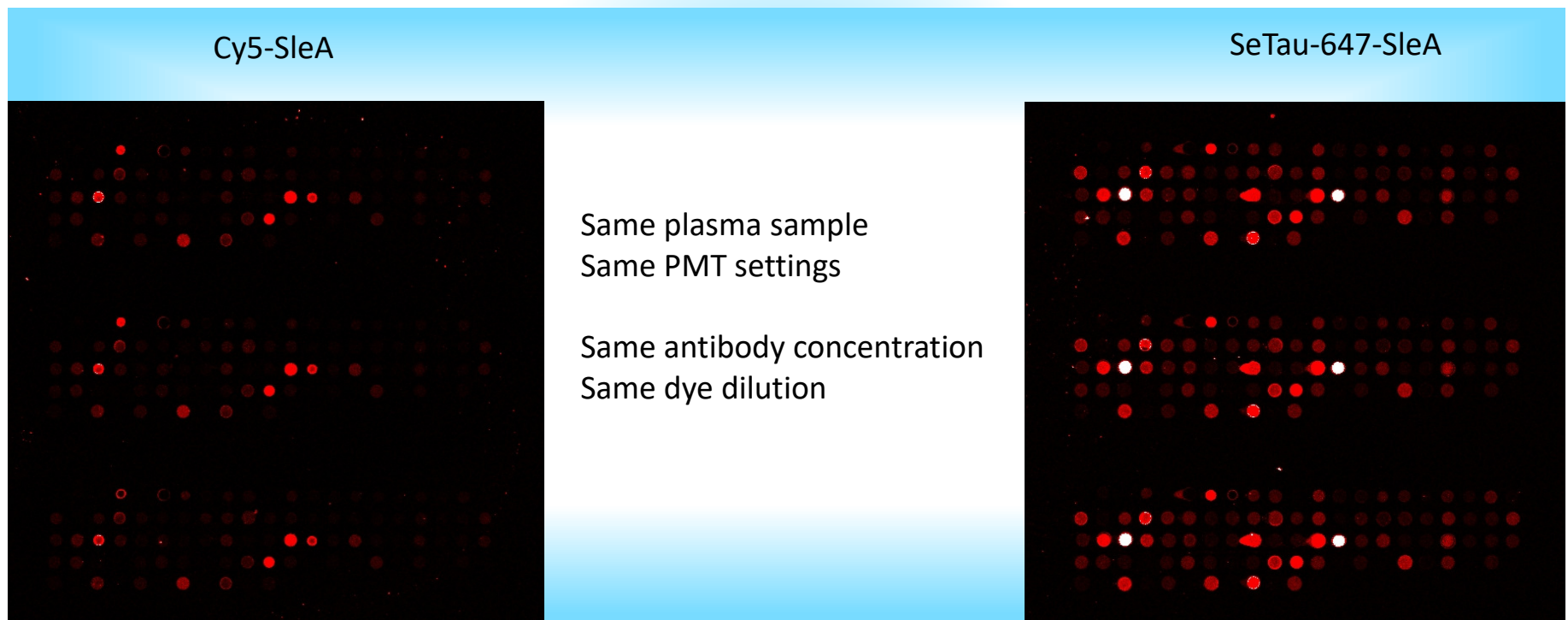
SeTau647-SleX



Same plasma sample
Same PMT settings

Same antibody concentration
Same dye dilution

SeTau-647-SleA antibody has a brighter signal than Cy5-SleA antibody



2014 Silver Ct East
Urbana IL 61801
support@setabiomedicals.com

Tel.: 217 417 2160
www.setabiomedicals.com

SETA BioMedicals
Fluorescent Tools for BioMedical Applications